



Door County Land Trust

# LANDINGS

Connecting You to Door County's Vital Lands & Waters

*You're Invited!  
Annual Gathering • August 15th*

Journal of the  
Door County Land Trust  
Summer 2025, Vol. 28, Issue 1





# Door County Land Trust

Door County Land Trust protects the wild places, scenic beauty, and ecological integrity that make the peninsula and islands so special. The Land Trust is a local, member-supported, non-profit organization. It is thanks to members and donors that over 10,000 acres are now protected. Land Trust nature preserves, located throughout Door County, are open for hiking and other low-impact, non-motorized recreational activities—all at no charge to the public.

## Board of Directors

### President

Roy Thilly

### President-Elect

Deb Hagman-Shannon

### Treasurer

Bob Ling

### Secretary

Mark Holey

### Past President

Donna Hake

Meredith Coulson-Kanter

Dave Harris

Bryan Nelson

Anna Pepelnjak

Bob Ryan

Rick Scott

Deneen Wiske

## Past Board Members

Nancy Aten

Jim Lester

Bob Barlament \*

Judy Lokken

Jean Barrett

Paul Mahlberg

Tom Blackwood

Mark Martin

Mike Brodd

Neil McCarty

Dan Burke

John McMahon

Fran Burton

Beverly Njaa \*

Dave Callsen

Kevin Nordahl

Beth Coleman

Jeff Ottum

Andy Coulson

Frank Pechman \*

Robert Cowles \*

Judy Perkins

Donna DeNardo

Nancy Rafal

Peter Deschler

Kate Rohrer

Sharon Donegan

Gretchen Schmelzer

Frank Failing \*

Carl Scholz

Jack Finger

Neil Shadle

Cathy Fiorato

Oliver Skrivanie

Robert Forsberg

Mary Standish

Darlene Forsberg

Tim Stone

Barbara Frank

Bill Tischler \*

Ken Gill

John Turner

Betsy Guenzel \*

Kieth Van Dyke

Julie Guilette

Rob Van Gemert

Chan Harris \*

Rob Watson

Tony Haswell

John Wilson \*

Jon Hollingshead

Kathy Wolff

Laurel Hauser

Karen Yancey

Jim Janning

Robert Yeoman

John Jessup

Bill Yunker \*

Jim Ingwersen \*

Virginia Yunker \*

Jim Kinney

Elizabeth

Lucy Klug

Zimmerman

Lon Kopitzke

James Zimmerman \*

Terry Lappin

\* Founding Members

## Door County Land Trust Staff (from left to right)

### Communications Coordinator

Lucia Hodkiewicz

### Administrative Director

Kristi Rice

### Community Conservation

Coordinator

Paige Witek

### Membership Coordinator

Sara Dennison

### Communications Manager

Don Krumpus

### Charitable Giving Director

Cinnamon Rossman

### Conservation Easement Program Manager

Drew Reinke

### Land Project Manager

Carrie Ehrfurth

### Seasonal Stewardship Assistant

Makaylee Kuhn

### Stewardship Field Coordinator

Maddie Tishler

### Land Stewardship Specialist

Thomas Stasiak

### Executive Director

Emily Wood

### Land Protection Manager

Brian Forest

### Administrative Assistant

Amy Dwyer

### Seasonal Restoration

Assistant

Alanna Fabian

### Ecological Restoration

Manager

Tina Lee

### Conservation Director

Jesse Koyen



## On the Cover

By John Van Den Brandt

**From the Photographer's perspective:** "Research says that a fox can hear a wristwatch ticking from forty yards away. Ordinarily, that acute hearing makes a wildlife photographer's job even more challenging, but it worked to my advantage on this day. While patiently tracking my quarry through the camera viewfinder, just a stir of breeze whispered across the fabric of my shirt, snapping the fox to full attention and momentarily freezing him in a picture-perfect dog show pose. Seeing and capturing moments like this make it an easy choice to support the Door County Land Trust and its work to preserve wild places and the creatures that live there."

# A Letter from the Executive Director

Dear Reader,

Cape Cod, often considered the gold standard of coastal conservation, has protected more than 30% of its land. That remarkable achievement reflects decades of foresight, investment, and community commitment. Here in Door County, often called the Cape Cod of the Midwest—we are working toward a similar vision. But today, just 11% of our incredible landscape is protected, even when you combine DCLT's 10,000 acres with the state and county parks, DNR State Natural Areas, and conservation lands from partners like The Nature Conservancy, The Ridges Sanctuary, and Crossroad at Big Creek.

That number tells us two things: how far we've come, and how much more we must do.

Door County is one of Wisconsin's most biodiverse counties—a region rich with rare habitats, coastal wetlands, fragile shorelines, and treasured blufftops that face increasing pressure from development and climate change. Every acre we protect is a promise—to future generations, to wildlife, and to the very identity of this place we love.

The Land Trust has helped secure over 10,000 acres for permanent protection, thanks to our supporting members like you. But reaching even a fraction of what Cape Cod has accomplished will require all of us—together—doubling down on our efforts.

Your continued involvement is essential. Whether you support us through membership, volunteer your time, or share our mission with friends and neighbors, you are part of the solution. And in the months ahead, as funding sources shift and conservation becomes more challenging, your commitment will matter more than ever.

We invite you to dream big with us. Let's imagine what Door County can look like with 20%... even 30% protected. Let's make sure the heart of Door County endures.

With gratitude,

Emily A. Wood  
Executive Director



P.S. If you've not yet joined the effort to protect Door County, now is the time! When you give before July 31 your donation will be **DOUBLED** with a matching gift from Mary Prindiville. Read her inspiring story in this issue on page 7.

## Welcome to Our Seasonal Staff!



*Alanna Fabian*

### Restoration Assistant

Alanna assists DCLT with various restoration projects and also ensures the accuracy of our annual monitoring reports from the past five years—a crucial task for our upcoming reaccreditation. She will soon begin a significant mapping project using ArcGIS to create cultural resources maps that will inform our future stewardship decisions. We are grateful for Alanna's dedication and skills!



*Makaylee Kuhn*

### Stewardship Assistant

Makaylee is actively involved in our restoration efforts, working to remove invasive species and ensuring the health of our native ecosystems. She is essential to improving our visitor infrastructure—dedicating her time to crucial trail maintenance, installing new signage, and assisting with parking lot repairs. Makaylee's enthusiasm and hard work makes a major difference for our preserves!

# Our Conservation Priorities

## Protection Guided by Science

**S**un glimmers on the scales of the rainbow trout; the bulbous yellow lady slipper orchid brightens a path; the wood thrush's cheerful song enlivens the forest. These moments of wild beauty are possible today, but how can we ensure their survival?

As we consider how to protect Door County's natural areas, we continually fine tune our strategies. Guided by scientific data and reports from trusted sources—like The Nature Conservancy, the U.S. Geological Survey, and the Wisconsin DNR—Door County Land Trust can identify where conservation efforts, powered by grants and donors like you, will have the greatest impact.

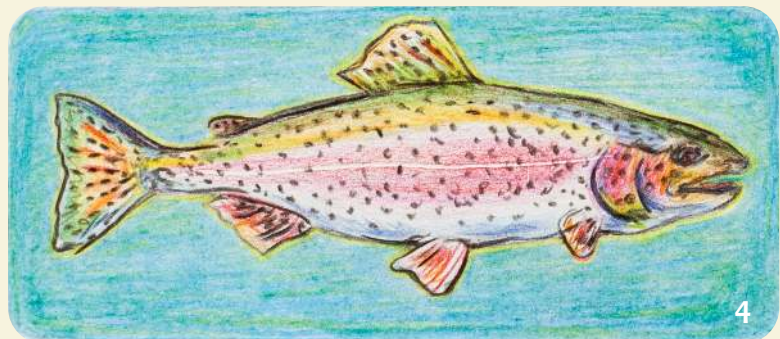
The Land Trust has developed seven science-based Conservation Priorities to identify the areas most essential to the long-term health and resilience of Door County's natural environment:

### 1. Significant Geological Features

Composed of Silurian dolomite, the Niagara Escarpment was formed over 400 million years ago in a shallow sea and was later shaped by glacial activity. This geological formation is visible in the towering bluff edges that hug our shorelines. Today, it supports unique microclimates and rare habitats that host species found nowhere else on Earth. Protecting the escarpment conserves not only a critical geological structure, but also the ecological systems that depend on it.

### 2. Surface Water & Groundwater Resources

Water defines the Door Peninsula. Glacial meltwater carved channels that still drain into Green Bay and Lake Michigan today. The health of beaches, drinking water, wetlands, and streams depends on the path the water takes—and the region's karst topography offers little natural filtration. Protecting these water resources safeguards our drinking water, as well as species like trout and the endangered Hine's emerald dragonfly.



1. Cave Point, part of the escarpment
2. A flowing creek
3. White Spruce
4. Rainbow Trout



5. Wood thrush  
6. A woodland ecological corridor  
7. Yellow lady slipper orchid

### 3. Native Forest Communities

Door County's unique geography – extending into Lake Michigan – creates cool, lake-tempered summers and allows for a rare percentage of boreal forest to exist here. This mossy and magical forest community is just one of many that the peninsula hosts. Rare orchids, wild cranberries, warblers, and white spruce call this area home. Keeping native forest communities protected will preserve not only trees, but the entire web of life they sustain.

### 4. Fish Habitat

Northern pike, smallmouth bass, trout, suckers and many other fish rely on Door County's waters. Protecting fish habitat not only benefits the survival of these species but also helps waterfowl, shorebirds, a range of plant communities, and aquatic invertebrates to thrive. By stewarding these areas, we can work to control invasive species that have significant impact on native species, and ensure the health of our lakes, coastal marshes, fens, and outlet streams.

### 5. Migratory & Breeding Bird Habitat


A wood thrush flies hundreds of miles from Central America, seeking Door County's forested shoreline where it can finally rest, refuel, mate, and raise its young. Bird habitats—like forests, wetlands, and prairies—also support thousands of other species, from pollinators to amphibians to rare plants. When habitat for birds is protected, we help safeguard biodiversity as a whole.

### 6. Riparian & Ecological Corridors

Ecological corridors connect vital habitats in an otherwise-fragmented landscape, enabling wildlife to migrate, find food, and maintain genetic diversity essential for survival. Riparian zones—the vegetated buffers along streams and rivers—reduce erosion and water pollution while supporting rich biodiversity, including migratory birds and sensitive amphibians. Protecting natural pathways safeguards the resilience of entire ecosystems.

### 7. Rare Species

Door County is home to remarkable species like the yellow lady slipper orchid, giant pinedrops, little brown bat, and four-toed salamander. The Wisconsin's Natural Heritage Inventory program has documented at least 170 rare or endangered species here, comprising many uniquely rare natural communities. Their presence highlights areas of exceptional ecological importance—and fragility.

Your support is critical to our conservation efforts. Guided by science, we can have the most impact by focusing resources on these conservation priorities. Together, we can protect and care for Door County effectively, committing to a future where the thrush continues to sing, trout thrive in cold streams, and ancient cliffs continue to sustain the unique species that depend on them. Together, we are stewarding and preserving the natural places that keep Door County wild, resilient, and beautiful for future generations. 

An abundance of Jack-in-the-Pulpit (*Arisaema tiphyllum*) hides amongst wood ferns at Ephraim Nature Preserve at Anderson Pond. This spring ephemeral grows from a corm in shaded, wet, woodlands. It begins with two large trifoliate leaves growing from a single stem, later producing a spadix—a spike known as “Jack” covered in tiny green or purple flowers—and then a spathe—the “pulpit” which grows to form a hood over the spadix. The flowers are hermaphroditic—growing initially only male flowers on top and in later years, female flowers on the bottom—that mature at different times. Plants with female flowers attract small flies and gnats with a mild scent and can trap them in the cup of the spathe, assisting pollination. Photo by Lucia Hodkiewicz



# Protect the Lands & Waters You Love



Oil painting at Grand View Park by Gretchen Klug



Left: Mary Prindiville stands in front of the Hardy Gallery in Ephraim, where she has been a docent for seven years.

**A** reverence for Door County’s wild lands and deep connection to the arts inspired Mary Prindiville to offer a challenge to fellow members to match her \$25,000 gift to the Land Trust. Through July, she’ll match each donation dollar for dollar for the 2025 Conservation and Stewardship Campaign.

Mary’s roots to Door County’s wild places began in college. They deepened each time she’d visit from the western part of the state to restore herself before going back to teach in the fall. By 2017, Mary found herself noticing Door County Land Trust preserve signs dotting the backroads and hopped out of her car to explore them. One DCLT preserve map and a good dose of curiosity later led her to more protected wild lands and straight into Door County’s thriving

**With heartfelt love of Door County’s wild places, Land Trust member Mary Prindiville invites you to join the challenge to protect our precious lands and waters.**

conservation family. “A connection with the natural world, the opportunity to walk barefoot in the grass, to plant seeds in the soil, to hear birdsong, or touch the bark of an ancient oak should be a fundamental human right.’ I believe that,” Mary says quoting Lucy Jones’s *Losing Eden: Our Fundamental Need for the Natural World and Its ability to Heal Body and Soul*. She continues, “When the Door County Land Trust invites me to pull off the road and walk on the wild and beautiful lands of Door County, I am grateful.”

Mary says her devotion to wild lands also comes from the arts. She writes, “I have been a docent at the Francis Hardy Gallery in Ephraim for seven years. When visitors arrive, often escaping big cities, they’re looking for places to explore. In addition to

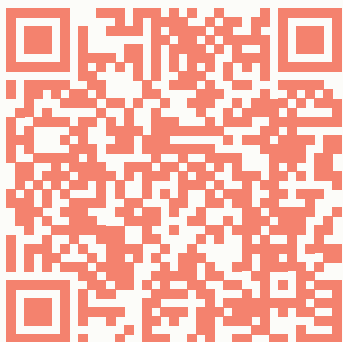
# "This is the land that calls out for protection now..."

our beautiful parks and other galleries, I tell them about DCLT's protected properties, and I hope they will consider contributing to the outdoor spaces they enjoy here."

Mary recounts how Jim Ingwersen left his farmland, galleries, and buildings to the Peninsula School of Art. Jim was a beloved local artist and an original founder of DCLT. His story reminded her about the interconnectedness of art and nature. Mary says, "This is the land that has attracted artists, musicians, and theatre groups. The Door County Land Trust... protects the wild spaces that draw creative people here. This is the land that calls out for protection now... I am so impressed by the vision DCLT has—their plans to hedge against development, the care for wild habitats, for rare plants, for birds, and animals. DCLT works to keep water clean and maintain trails... The work of this nonprofit is overwhelming to me, and I invite you to share in the responsibility for the land we have here."

Mary protects wild lands to ensure all of us have the opportunity to be moved by them the way she has been. She says, "Words of Aldo Leopold remind me both of the responsibility and the joy that come along with protecting the land that surrounds us. It brings out the artist and the hiker in us. It heals our bodies and our souls." Her story is one of curiosity, connection, conservation, and championing a challenge for us to join her in preserving the future of beautiful, wild Door County. 🌿

"I invite you to share in the responsibility for the land..."



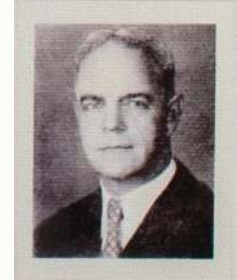
Use this QR code or the handy envelope above to submit a donation to DCLT's Conservation and Stewardship efforts today!



Give today and your  
donation will be  
matched dollar for  
dollar up to \$25,000.

Donate online  
or enclose your  
gift today to  
ensure places  
throughout Door  
County will be  
protected **forever!**





# Conservation in "Cherryland"

"Our family has blood in this farm."

Carl Barnard remembers his mother saying "our family has blood in this farm," a phrase that carries the weight of five generations rooted in Door County's soil. For nearly 150 years, the Barnard family has cared for their property, once part of the thriving tart cherry industry that earned Door County the nickname "Cherryland."

Today, Carl and his brother William have taken steps to ensure the land's future by working with Door County Land Trust to permanently protect 120 acres through conservation easements. These agreements allow the land to continue supporting traditional uses—like farming and timber harvest—while ensuring it's never sold for development.

The brothers' two properties are now protected: one an 80-acre parcel with agricultural fields, working forest, and historic structures; the other a 40-acre tract of mature mesic forest that supports critical bird habitat, conserves water resources, and protects an ecological corridor.

"Preserving working lands ensures that the cultural and natural heritage of Door County endures for generations to come," said Drew Reinke, Conservation Easement Program Manager at DCLT.

Carl credits his daughter, Rebecca, for inspiring the family's conservation journey. Her vision and persistence helped finalize the easements and bring new energy to a legacy rooted in stewardship.

Recently, Rebecca protected her adjacent 18-acre property with a conservation easement—preserving the forested escarpment she grew up seeing from her childhood bunkbed in the family farmhouse.

"Land isn't just a commodity," Carl said. "It's a part of who we are."

The Barnards hope their decision inspires other families to protect their lands. As development pressures rise, conservation easements offer a way to honor history, protect habitat, and preserve the soul of Door County—for generations to come.

# A conservation easement is a tool for land protection ... but what is it?

## FAQs about CEs (Conservation Easements)

### 1. What is a Conservation Easement (CE)?

A CE is a legal agreement between a property owner and a land conservation organization like Door County Land Trust (DCLT). CEs protect natural and scenic resources on a property by permanently restricting specific types of activities (like development) that can take place while keeping the land in private ownership.

### 2. Will establishing a CE mean my property becomes open to the public?

No. The property remains privately owned by you, the landowner.

### 3. Will a CE restrict hunting rights on my land?

No. DCLT's conservation easement agreements are silent on hunting. The landowner makes the decision on whether the property is hunted and by whom.

### 4. Does a CE restrict all future development on my property?

Each CE is different and is written to reflect the owner's present and future conservation goals, and to reflect the specific conservation priorities on each property. Nearly all CEs limit the type and amount of future subdivision and/or development of the property, but "building envelopes" can be outlined where current and future development is allowed.

### 5. Is there a tax advantage to establishing a CE on my property?

CE owners have the option to have their property appraised following the recording of a conservation easement with the county. Property value may diminish due to development restrictions, which you may be able to deduct on your federal income taxes for the value of the donation. You may see a decrease in your property taxes. It is strongly recommended that you consult your tax advisor if you are considering a CE.

### 6. Will establishing a CE cost me money?

DCLT will ask you to split the cost of a survey. Other costs to establish the CE are the obligation of the conservation organization.

### 7. Does DCLT have any ownership rights to my CE property?

No. Organizations holding CEs only have the authority and responsibility to make sure the terms of the CE agreement are honored in perpetuity.

### 8. If CEs can lower taxes, are they bad for the local economy?

No. Limiting development on land protects not only natural habitat conservation values but also scenic and open space values. Places with more scenic qualities can actually increase the value of surrounding properties. Natural scenery is important to the culture, economy, and rural character of Door County.

**Protect your land. Contact DCLT to discuss how a conservation easement can help you reach your conservation goals. Call 920.746.1359.**



# A Nest Box Alone Isn't Enough

## Why Monitoring Matters, by Paige Witek

Gaby M. observes activity at a kestrel nest box from a distance.

**A** well-placed nest box can offer birds a safe place to raise their young—but without regular monitoring, even the best-built box can become a hidden hazard.

Unchecked, problems like wasp nests, parasites, predator access, or nest abandonment can turn a refuge into a risk. That's why a good nest box is a monitored nest box.

By keeping tabs on nest activity, we not only protect the birds inside—we also gather valuable data that helps scientists, conservationists, and communities support healthy bird populations. In short, monitoring turns passive shelter into active stewardship.


The Door County Land Trust hosts nest boxes on several properties. These nest boxes are placed to support native bird species such as eastern bluebirds, American kestrels, and wood ducks. However, lots of other cavity-nesting species will use the nest boxes as well such as tree swallows, black-capped chickadees, house wrens, eastern screech owls, hooded mergansers, and more. Dedicated volunteers monitor these nest boxes on a regular basis during the breeding season.



The frequency of their checks and the tasks involved vary based on the species. At the end of the season, volunteers will report the success of the nest boxes, i.e. the number of native birds that have fledged. To fledge means the young bird has hatched, grown, and left the nest. This information helps the Door County Land Trust make decisions about land management and how beneficial these habitats are.

We also report our data to larger databases such as the American Kestrel Partnership and the Bluebird Restoration Association of Wisconsin to better understand populations of those species.

By turning our attention to what happens inside nest boxes, we're doing more than just watching birds—we're actively contributing to their future. Every recorded hatch, every fledged chick, and every observation made by volunteers adds up to a clearer picture of how our local and regional bird populations are faring.

A nest box is a start—but a monitored nest box is a commitment to conservation, community, and the vibrant life that calls our landscapes home. 

If you are interested in learning more about nest boxes and how you might start one on your own property, we recommend visiting the Cornell Lab of Ornithology's website: [nestwatch.org](https://nestwatch.org).



# Habitat Enhancements for Birds and Pollinators around Motus Stations

By Paige Witek



In previous editions of this newsletter and other publications of the Door County Land Trust (DCLT), we have expressed excitement about the installation of Motus stations on three DCLT properties: Domer-Neff Nature Preserve and Bird Sanctuary on Washington Island, Legacy Nature Preserve at Clay Banks, and Chambers Island Nature Preserve.

Motus is an international collaborative research network that uses cooperative automated radio telemetry to track small flying organisms. To learn more about what that means and its significance, check out our webinar on the Motus Wildlife Tracking System posted on the photo and video gallery section of the website. Opportunities for future projects are available.

But the Motus station installation is not all there is to the excitement! The station on Washington Island was made possible by a collaborative project spearheaded by the Lake Michigan Bird Observatory (LMBO) with funding from a program called 'Sustain Our Great Lakes' or SOGL.

Through this grant agreement, in addition to being a part of the LMBO's efforts to monitor bird migration via the Motus stations, the Door County Land Trust is engaging in efforts to enhance the habitats around the

Washington Island Motus station for pollinators and migratory birds. Migratory birds and pollinators play several vital roles in maintaining the healthy ecosystems on which we all depend and, therefore, efforts to enhance their habitat are essential as is increasing their declining populations.

Efforts have already been made to remove non-native and invasive woody species from the Domer-Neff Nature Preserve and Bird Sanctuary. The next step is to plant 200 native trees and shrubs including six different species.

A variety of factors went into the decisions of which species should be planted, including seed availability, soil and moisture conditions and timing issues. The species selected are:

- Allegheny serviceberry (*Amelanchier laevis*)
- Dutch-belted viburnum (*Viburnum acerifolium*)
- Fragrant white-blossomed dogwood (*Amelanchier canadensis*)
- American Plum (*Prunus americana*)
- Carolina rose (*Rosa Carolina*),
- St. John's wort (*Hypericum kalmianum*)

If you are interested in being a part of these important efforts, the Door County Land Trust is hosting a tree planting on September 16, 2025, on Washington Island at the Domer-Neff Nature Preserve and Bird Sanctuary. Contact Community Conservation Coordinator, Paige Witek, at [pwitek@doorcountylandtrust.org](mailto:pwitek@doorcountylandtrust.org) to learn more and sign-up. ✨

Motus Tower on Washington Island. Photo by Tina Lee



A ruby-crowned kinglet

# Upcoming Events

Scan the QR code for more **info & registration**, or visit the "Upcoming Programs" page on our website.



Membership is not required unless noted. A donation of any amount makes you a member!

## July

## August

- 17** Discover Picha Woods Natural Area  
9-11 AM
- 18** Saving the Bats at Three Springs Barn  
8-9:30 PM
- 26** Discover Bay Shore Blufflands Nature Preserve  
9-11 AM
- 30** Nature Explorers: Family Discovery Hike at White Cliff Nature Preserve  
2-3 PM

- 2** Discover Three Springs Nature Preserve  
9-11 AM
- 5** Discover Lautenbach Woods Nature Preserve  
9-11 AM
- 9** Rock Solid: Geology Hike on Washington Island  
10 AM-12 PM
- 15** Door County Land Trust Annual Gathering  
2-5 PM

## New Merch!

Pre-order our newest Door County Land Trust baseball cap!\*



Available through August 31st. Visit our online gift shop to order! \$30  
\*pre-orders take 2-4 weeks

# Register for the Annual Gathering today!

**Friday, August 15 • 2-5 pm**

**Held at the Barnard's family farm in Sevastopol**

Join us for an afternoon of celebration, where we raise a toast to YOU – our valuable community - and to the preservation of Door County lands and waters—forever. This year's theme is **“Preserving the Rural Character of Door County.”**

**Register online at: [DoorCountyLandTrust.org/2025Gathering](https://DoorCountyLandTrust.org/2025Gathering)**

# Your Membership Keeps Door County Wild!




## What you do

The wild lands and waters of the Door County Peninsula and its islands cannot be protected without you! Member donations fund nearly 85% of DCLT's program, operational, & stewardship expenses.

## What we do together

Since 1986, with the help of generous donors, DCLT has permanently protected and cared for over 10,000 acres of shoreline, forests, wetlands, ecologically significant wildlife habitats, and some of the most beautiful scenery in Wisconsin.

## Join a conservation community who believes that...

-  Door County is like nowhere else on earth and that it is our obligation to defend and steward Door County's lands and waters...forever.
-  Healthy lands and waters improve the quality of our lives and that of future generations.
-  Well-cared for lands and waters and connected native landscapes are essential to support the diversity of Door County's ecosystems.

**Help protect Door County! Become a member today!**  
Mail in the included envelope, scan the QR code  
or call DCLT at **920.746.1359** to make a donation & join.



## THANK YOU to Our Annual Business Members!

### Platinum sponsors



### Gold sponsors



### Silver sponsors



Ashbrooke Hotel  
Door County Eye Associates  
Door County Nature Works  
Details Hair Innovations  
Eagle Harbor Inn  
Gills Rock Stoneware  
Glidden Lodge Beach Resort



Grasse's Grill  
Impressions Printing & Graphics  
Jerry's Flowers  
Kick Ash Coffee  
Lautenbach Orchard Country



Loma Cottages  
Meissner Landscape, Inc.  
Nicolet Bank  
Samara Jewelry, LLC  
Smile Designs of Door County

Dr. Timothy Tishler, DDS  
Terra Cottages  
True North Real Estate  
Wagon Trail Campground  
Washington Island Ferry Line  
Yellowstone.ai



## Door County Land Trust

Protecting Door County's Exceptional Lands and Waters...Forever

PO Box 65, Sturgeon Bay, WI 54235

[www.DoorCountyLandTrust.org](http://www.DoorCountyLandTrust.org)

(920) 746-1359



- Sound Finances
- Ethical Conduct
- Responsible Governance
- Lasting Stewardship



Following our trails? Follow us on Facebook  
& Instagram! @doorcountylandtrust

**“Unless someone like you cares a whole awful lot, nothing is going to get better. It’s not.”**

— The Lorax

