

Landings *News Splash*

Winter 2018-2019 Newsletter from the Door County Land Trust

*“The earth, like the sun,
like the air, belongs to
everyone and to no one.”*

-Edward Abbey

Thank you for helping to
protect Door County's
wild things and wild places.



Door County Land Trust

Protecting Door County's Exceptional Lands and Waters...Forever



Wood Thrush on Nest Chambers Island

Protecting stretches of contiguous forest is amongst the top priorities of the Door County Land Trust, and for good reason. Forest fragmentation is the primary cause of the decline of the Wood Thrush, one of many birds requiring a range of hardwood forest habitat. The sight of a nesting Wood Thrush on Chambers Island is a positive sign of the quality of forest and wildlife habitat protected within the Chambers Island Nature Preserve.

Peregrine Falcon Door County Dolomite Cliffs

During this ‘Year of the Bird,’ aptly named for the centennial of the International Migratory Bird Treaty Act, conservation work has no better symbol of success than the Peregrine Falcon. The use of pesticides like DDT in the 1950s and 60s caused the falcon to become an endangered species over much of its range. Efforts to breed and reintroduce birds into the wild led to their overall recovery. Though the Peregrine Falcon was removed from the U.S. Endangered Species list in 1999, they had not been confirmed in Door County until 2015. Read more on page 14.

Cover photo by
Melody Walsh



***“The Wood Thrush is
an icon and barometer
of forest conservation
in the eastern
deciduous forests.”***

**-Wisconsin Bird
Conservation Initiative**



Photo by Naaseem Reza

THE FINAL FRONTIER? NO SUCH THING IN DOOR COUNTY

Dear friends,

Enclosed within this issue of *Landings* —*News Splash*, we share stories of the life thriving on our peninsula and islands, and of efforts to care for this exceptional corner of the universe. These stories of conservation are made possible by members, volunteers, conservation partners, and our community who love Door County.

With your help the Door County Land Trust has protected more than 8,000 acres and is diligently improving native habitat across the peninsula and islands.

Why does it matter? Peregrine falcons that have not been nesting in Door County since the 1950s are returning. Rare Pitcher's dune thistle is making a comeback at the Sturgeon Bay Ship Canal Nature Preserve. Species never before documented in Door County are being found for the first time. Undiscovered realms are literally in our back yard.

Citizen scientists, volunteers, and staff at the Door County Land Trust are gearing up for 'The Year of Discovery' and a fresh look at the lands and waters—and the plants and animals protected within.

Join us for the journey....

Tom Clay, *Executive Director*
Door County Land Trust



Photo by Dan Eggert

NEWLY PROTECTED! ISLANDS IN A LAKE... ON AN ISLAND IN A LAKE

Lake Mackaysee, the larger of two inland lakes on Chambers Island, holds two small islands with stopover habitat for birds. In September 2018, the Town of Gibraltar purchased the islands from the Wisconsin Board of Commissioners of Public Lands and then sold the islands to Door County Land Trust for permanent protection. The islands are the newest additions to the Chambers Island Nature Preserve.

Protecting the islands will maintain the integrity of the nature preserve and the larger landscape. Efforts to eliminate invasive *Phragmites* and non-native cattail on the shoreline of Lake Mackaysee began in 2018 thanks to a US Fish and Wildlife Service partner grant and a Cellcom Green Gifts grant.

GREAT LAKES RESTORATION INITIATIVE AWARDS CHAMBERS ISLAND GRANT

The island's rich biodiversity led conservation partners to place it as a top priority for land protection. We are excited to announce the Environmental Protection Agency has tentatively awarded a \$208,500 grant through the Great Lakes Restoration Initiative (GLRI).

The grant will partially fund the purchase and permanent protection of 85 more acres by the end of the year, bringing the total to 689 acres protected on the island. Efforts are underway to secure private donations for the protection of additional parcels in 2019. The nature preserve ensures Chambers Island remains untrammelled and remote, the perfect wayside stop for migrating birds and a microcosm of the various plant communities found across northern Wisconsin and Door County.



“ Ship Canal is probably the most healthy population of Pitcher’s thistle... It’s really, truly remarkable. And in part, it is because of the incredible restoration work the Door County Land Trust has been doing there.”

-Pati Vitt, Chicago Botanic Garden

DUNE PLANTS ATTRACT POLLINATORS

Researchers Kayri Havens and Pati Vitt from the Chicago Botanic Garden study the Pitcher’s dune thistle at a number of Great Lakes sites, and have years of data showing the Pitcher’s thistle is thriving at the Sturgeon Bay Ship Canal Nature Preserve!

Vitt attributes the thistle’s rebound to the near-complete eradication of invasive spotted knapweed and bouncing bet. She says, “When you get rid of those invasive species what you end up doing is opening up the landscape for this very important native species. The species will respond. And that’s what we’re seeing here.”

That’s a success story for sure! But, it’s only a piece of the story. From late June to mid-July, the only native bloom on the dunes is the Pitcher’s thistle. Without Pitcher’s thistle, pollinators like native bees do not have a steady food source and 9 of the 29 dune pollinators at this site would be lost. Door County’s cherry and apple orchards rely on native pollinators too. The effect of losing the Pitcher’s thistle causes ripples far beyond our shorelines.

Watch Havens and Vitt present at the 2018 Annual Gathering online at www.DoorCountyLandTrust.org/Thistle

Native bee illustration by Steve Buchanen is available as print poster for sale online at pollinator.org

Photo by Carl Cochrane

Dune goldenrod

Photo by Carl Cochrane

Philadelphia lily

Photo by Carl Cochrane

Invasive spotted knapweed

LIFE ON THE DUNES

Imagine hot, dry sun, winds whipping off the lake, few nutrients available in the soil and sands blowing across the horizon. Life on the dunes can be tough. It's even harder if your neighbor is an invasive plant with toxic roots.

Spotted knapweed has purple to pink thistle-like flowers, tough stems and a tap root that withstands drought and wet soil equally well. It's enemy number one on the Sturgeon Bay Ship Canal dunes. With the help of volunteers, we've been battling the spotted knapweed for six years—and the dramatic results show how native plants are now flourishing.

Eliminating spotted knapweed benefits native and rare plants like dune goldenrod, thickspike wheatgrass, and Pitcher's dune thistle. Carl Cochrane, retired biology teacher and preserve steward at the Sturgeon Bay Ship Canal, closely monitors new appearances of rare plants, such as fringed gentian, Mingan's moonwort, dunewort, and Philadelphia lily. Among his findings last year is the hairy-necked tiger beetle.



Mingan's moonwort

Photo by Carl Cochrane



Photo by Joe Taylor



Photo by Karen Murchie

Longnose suckers



Photo by Joe Taylor

WHERE LAND MEETS WATER

From the lands surrounding Little Lake on Washington Island, to the creeks at Three Springs Nature Preserve and the Southern Door headwaters of Keyes Creek, every acre of land protected has a connection to the water of the streams and creeks that feed Green Bay and Lake Michigan. And, those streams are teeming with fish!

Dr. Karen Murchie at the Shedd Aquarium Center for Conservation and Research began studying Lake Michigan suckers at Heins Creek and Keyes Creek in early spring 2017. Suckers provide early spring nutrients in streams, kick-starting the food-web for other fish.

Volunteers from Door County Land Trust and The Ridges Sanctuary collected data for a long-term study that will compare sucker migration, water temperatures, stream flow, and other factors to determine what prompts the suckers to spawn—and if climate change is affecting this key in the food-web.

Interested volunteers may contact us at volunteer@doorcountylantrust.org.



Photo by Dan Eggert

2018 CHAMBERS ISLAND BIOBLITZ

This past summer, 32 scientists led a four day study to inventory the plant and animal species during the first-ever Chambers Island BioBlitz. Assisted by more than 70 volunteer citizen scientists, they recorded a breathtaking 560+ species.

Milwaukee's Urban Ecology Center (UEC) coordinated the collection and analysis of the incredible amount of data recorded during the event. Jessica Orlando, GIS (Geographic Information Systems) and Field Data Coordinator at UEC said, "It's remarkable that a small island has such a rich representation of species, some not even found on the [Door County] mainland."

During summer months, it is unusual to see so many species of birds. 69 bird species were documented during the BioBlitz, which is a high number for the late-summer breeding season. The high count is evidence of the number of breeding birds nesting on Chambers Island during the summer. State endangered Caspian Terns and four state special concern species were documented, confirming that Chambers bird habitat provides incredible diversity.

Christopher Tyrrell of Milwaukee Public Museum, Owen Boyle of Wisconsin Department of Natural Resources, and volunteers inventoried 155 plant species during the BioBlitz. When compared to a more intensive study done on the island in 2001, an impressive 24 additional native species were documented. The new findings are indicative of the diverse habitat types, including pine barrens, wetlands, inland lakes, hardwood forest, and shoreline among others.

Other data points to the need for ongoing research that would follow trends. UW-Stevens Point professor Chris Yahnke confirmed an active maternity colony of little brown bats. The bat is listed as a species of concern due to fungal white nose syndrome which has decimated populations across the country. The finding might suggest that there are unknown hibernacula that have not yet been infected with white nose syndrome—a positive sign for the imperiled species.

UW-Green Bay arachnologist Mike Draney recorded 18 new-to-Door County spider species. This discovery is proof that there is much to learn right in our own back yards.

The Chambers Island BioBlitz was generously funded by Robin, Susan, and Virginia Squier and Mary Brevard, in memory of John Squier, father and husband, who loved the island.





CITIZEN SCIENTISTS IN ACTION

Clockwise from left: Jessica Orlofske, UW-Parkside, examines a crayfish from Lake Mackaysee. Robin Squier, Urban Ecology Center, prepares a team of volunteers for bird banding. Eight-year-old Claire Kennedy inspects a garter snake found near the Chambers lighthouse. The eight-eyed, mosquito-eating



Photo by Barbara Flynn



Photo by Anna Schaeffer

Orchard Spider, is one of the only spiders named by Charles Darwin himself. UW-Green Bay entomology professor Mike Draney uses a 'pooter' to examine and collect spiders. Julia Robson, Waukesha County Parks, holds a large Eastern fox snake collected and released near the lighthouse. A team of birders watch a pair of Caspian Terns over Lake Mackaysee.



Photo by Ben Eggert



Photo by Jessica Orlando



Photo by Julia Seabright



Photo by Maria Braccato



BAY SHORE BLUFFLANDS DISCOVERIES

Beyond the Bay Shore Blufflands Nature Preserve, hundreds of acres are protected by private landowners through conservation easement agreements. These extraordinary neighboring landowners are partners in protecting the larger landscape. Large stretches of the Bay Shore Blufflands escarpment are protected as intact forest and wildlife habitat.

Dan Collins and Nancy Aten protect their properties in the Bay Shore Blufflands neighborhood with conservation easement agreements with the Door County Land Trust. Experience as native landscape architects also makes them exceptional neighbors. Combined with a love of the land and scientific knowledge, their search for understanding the land has led to remarkable discoveries this past year.

Gibraltar elementary students gathered one day this June to explore the wetlands with dip nets and magnifying glasses. With the help of these students, Dan and Nancy documented a new Blufflands neighborhood discovery, the Central Newt (*Notophthalmus viridescens*), and freshwater sponges—a first for Door County.

Photo by Nancy Aten

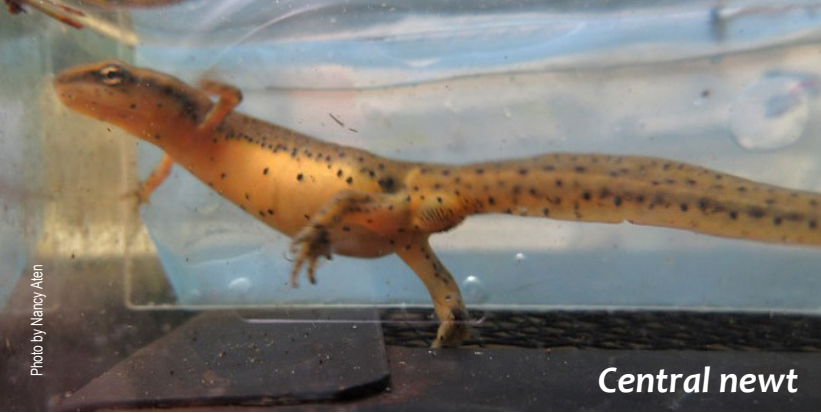


Photo by Nancy Allen

Central newt



Photo by Nancy Allen

Freshwater sponge



Pine Grosbeak

Photo by John Van Den Brandt

BAY SHORE BLUFFLANDS BUCKTHORN BLAST

In its issue, “Why Birds Matter,” National Geographic Magazine noted that 122 species of birds are forever extinct due to invasive species. Thanks to support from our members, that’s a problem that you are helping to solve every day. Invasive shrubs like common and glossy buckthorn, non-native honeysuckle, and autumn olive each have berries attractive to migrating birds. The berries ripen just as birds embark on their 2,000 mile journey south, but the non-native berries offer little nutritional value and some even cause dehydration.

Through this community conservation effort, neighbors, volunteers and the Bay Shore Property Owners Association, with the help of skilled contractors, continue efforts to eradicate invasive species from the nature preserve, while learning skills they can use on their own properties. With the majority of invasive species removed from the preserve, volunteers will begin pulling new invasive plants when they are young. In 2019 Door County Land Trust hopes to install a planting that features native alternatives landowners might use to replace formerly-popular invasive hedges.



Photo by Melody Walsh

PEREGRINE FALCONS RETURN TO DOOR COUNTY

The last successful nesting peregrine falcons were documented sometime in the late 1950s. Greg Septon, founder of the Peregrine Falcon Recovery Project, began to reintroduce the Peregrine falcon to Wisconsin by releasing captive-raised young in 1986. Since 1992 the population of peregrines has naturally rebounded—and now they are nesting on Door County's cliffs!

Citizen scientists Melody Walsh and Randy Holm of Washington Island sighted a male peregrine flying solo in 2015, but the following year the bird had attracted a young mate. In 2017, the pair fledged two young, pictured top left. And in 2018, the pair fledged four more, pictured below left at three days old, below at 21 days, and right at about six weeks. Melody and Randy are volunteers and citizen scientists with several organizations including Door County Land Trust. Their work as citizen scientists helps track the health of the peninsula and islands.



Photo by Melody Walsh



Photo by Melody Walsh



DISCOVER, STEWARD, INSPIRE — VOLUNTEERS MAKE A DIFFERENCE

Volunteers contribute to every aspect of the Door County Land Trust. They maintain trails, monitor birds, advise committees, lead events, inspire our community of supporters, and so much more.

Thank you for making the Door County Land Trust mission a part of your lives.

Aten, Nancy	Cubar, Susan	Gilster, Tad	Judd, Robert	McCutcheon, Windsor	Rock, Samantha	Van Gemert, Rob
Axelrod, Jon	D'Abbraccio, Deanna	Goodner, Dale	Keen, Dave	Miller, Diane	Rossman, Glen	Walsh, Melody
Axelr Aten, Nancy	DeNardo, Donna	Goodner, Mary	Klimaitis, Ron	Miller, Sandy	Rossman, Grace	Watson, Rob
Axelrod, Jon	DeNardo, Tony	Gordon, Rick	Klug, Lucy	Minahan, Claire	Samida, Judy	Weber, Chuck
Axelrod, Susan	Deschler, Peter	Greene, Tad	Knox, Julie	Minahan, Thomas	Samson, Krista Wilkie	Weber, Sigrid
Barnard, Francha	Desotell, Larry	Grelck, Carol	Kokes, Jeannie	Morgan, Barbara	Samson, Lydia	Wehling, John
Barnes, David	Doerr, Bobbi	Hagman-Shannon, Deb	Kriha, Darcy	Mullaney, Gail	Sauve, Bill	Whitney, Jane
Barrett, Jean	Donegan, Sharon	Haig, Barb	Kriha, Rob	Mutchler, Keith	Schley, Dan	Wick, Cindy
Berntsen, Penny	Eggert, Dan	Haig, Laurie(Nari)	Krumenacher, Jamie	Myers, Christa	Schmelzer, Gretchen	Widen, Arnold
Bender, Allison	Erskine, Holly	Hake, Donna	Kuhns, Roger	Naseem, Reza	Seiler, Terrie	Wilcox, Jock
Bennett, Nancy	Erskine, Tim	Hanney, Roxanne	Laird, Ben	Nelson, Bruce	Serrahn, Janet	Wilcox, Karen
Bennett, Tom	Feirer, Debbie	Hansotia, Marilyn	Lauter, Charles	Nelson, Bryan	Shadle, Neil	Wilner, Dorry
Benson, Don	Feirer, Russ	Hartman, Mary	Lauter, Estella	Nielsen, Laura Beck	Sherwood, Debra	Wolff, Kathy
Bicoy, Nalani	Finger, Jack	Hawley, Bob	Lester, Jim	Olson, Chris	Shields, Walt	Wolter, Cindy
Blackwood, Tom	Fiorato, Cathy	Hein, Marilyn	Lisle, Bev	Ottum, Barb	Shiels, Joan	Wolter, Rich
Blahnik, Judith	Fiorato, Tony	Henriksen, Will	Lisle, Tom	Ottum, Jeff	Siebel, Barbara	Yancey, John
Blahnik, Mary Ann	Fitzgerald, Tim	Hermann, John	Liss, Paul	Perkins, Judy	Smythe, Dick	Yancey, Karen
Blanchard, Pam	Fletcher, Bob	Holey, Mark	Livengood, Susan	Perry, Jim	Squier, Robin	<i>Your volunteer</i>
Blankenburg, Kathleen	Fletcher, Suzanne	Holm, Randy	Lokken, Judy	Peters, Glenna	Sterrenberg, Paul	<i>service deserves to</i>
Blankenburg, Ralph	Fortin, Guy	Hubbard, Denise	Lokken, Ron	Peters, Stefan	Stewart, Ruth	<i>be acknowledged.</i>
Brevard, Mary	Foss, Kirby	Hubbard, Kenneth	Lueking, Joel	Petersen, Sandy	Stone, Tim	<i>If we have made an</i>
Breving, Bob	Frank, Barbara	Huber, Mark	Lukes, Charlotte	Petrie, Lucia	Swanson, Gerry	<i>error or omitted</i>
Brumder, Robo	Frey, Barb	Hubing, Dan	Mabbott, Tom	Picken, Judy	Swanson, John	<i>your name from</i>
Burnham, Bonnie	Frey, Fred	Hunt, Mark	Mahlberg, Paul	Purinton, Hoyt	Taylor, Joe	<i>the list, please</i>
Cochrane, Carl	Friedberg, Gerri	Hunt, Sue	Maloney, Laura	Radtke, Al	Thilly, Mary	<i>notify us so we may</i>
Collins, Dan	Gebauer, Tony	Jacobs, Gail	Maloney, Ron	Rintelman, Jim	Thilly, Roy	<i>correct it for future</i>
Coulson, Andy	Georgenson, Tracy	Jordan, Tom	Martin, Mark	Rintelman, Mary Jane	Utley, Bill	<i>publications.</i>

A LEGACY OF LAND FOR THE NEXT GENERATION

Your legacy gift ensures the lasting and perpetual care of Door County Land Trust's protected lands.

By making a planned gift to the Door County Land Trust through your will or beneficiary designation, you will be welcomed into the Legacy Circle, a group of benefactors who have indicated that the Land Trust has been included in their estate plans. Many gifts planned by members of the Legacy Circle are designated by the Board of Directors to the Stewardship Endowment Fund to care for protected lands. To learn more about becoming a member of the Legacy Circle, call Development Director Cinnamon Rossman at (920) 746-1359.



LEGACY CIRCLE MEMBERS

Abbott, Ann

Anderson, Bob and Dorothy

Anderson, Robert C.

Anonymous (6)

Aten, Nancy and Collins, Dan

Aufrere-Sebetic, Jacqueline

Baer, Charles and Stephanie

Barrett, Jean and

Nevalainen, David

Beadell, Priscilla and Anthony

Bell, Hugh and Joyce

Blankenburg, Ralph and Kathy

Blanton, James and Barbara

Burkhardt, Richard and Dorothy

Burton, Frances and Paul

Bussard, Ken

Cady, Bonnie

CadJacob, Claire and DuMont, Debra

Callsen, Dave and Vornak

Cermak, Ardis

Coleman, Beth and Bessel, Jean

Conroy, Peter and Beverly Ann

Cooper, Terrie

Cosgrove, Michael and Julia

Cross, Jerry and Steffens, Jayne

D'Abbraccio, Deanna and

Morgan, Barbara

Deschler, Peter and Gina

Dimberg, Lyn

Donegan, Sharon

Eicken, Milacene S.

Friedl, Mike and Carolyn

Fundingsland, Donald W.

Gerrits, Lloyd R and Dorothy J.

Hake, Donna

Hansotia, Phil and Marilyn

Hansman, Edward and Sheryl

Hoebel, James and

Goldberg, Nancy

Holm, Barbara

Hunter, Fran and Laatsch, Bill

Jacobson, Rod and Jean

Klepp, Dottie

Klug, Karl and Lucy

Knox, Robert W and

Schlott, Kathryn E

Kokes, Dan and Jeannie

Koutnik, Dr Ed and Cindy

Kress, Bill

Larsen, Richard and Roberta

Leath, Mitch and Jean

Lesch, Jis and Barbee

Liska, Tony and Judy

Lisle, Tom and Bev

Loken, Donald R.

Lopez, Charlotte

Madden, Michael and Barbara

Miller, Ed and Sandy

Miller, Kenneth and Glenda

Moline, Ronald and Barbara

Morris, Greg and Terry

Nowak, Peter and Jean Ann

Olsen, Lawrence and Lynn

Perry, Kerry

Propsom, Rich and Bruesch, Jane

Schultz, Craig and Sandy

Schwengel, Jim and Judy

Seagard, Tom and Kozma, Brigitte

Seattle, Mr and Mrs Joseph J.

Shelton, Gerald and Lipp, Carolyn

Silberman, Ann Monteth

Standish, Michael and Mary

Taven, Lee

Turner, John and Judy

Turrieff, Tom

Van Den Brandt, John and Jean

Vanden Houten, Dale and

Scott, Richard

Vervoren, Thora

Walwark, James and Polly

Warner, David and Rose

Watson, Rob and Picken, Judy

Wilson, John and Karen

Wissink, Steve and Janet

Wittenkeller, Al and Judy

Yañcey, John and Karen

Yeomans, Robert and Charlotte

Yowell, Sylvia

Zehr, Alison

Door County Land Trust welcomed five new households to the Legacy Circle this year. Their names are listed in **bold type**.

Join us in thanking our Annual Business Members!

Please patronize these businesses that support land preservation.

And, when you do, please thank them for contributing to the Door County Land Trust.



Ashbrooke Hotel

Bier Zot

Blue Dolphin House

Dave's Tree Services, Inc

Door County Eye Associates

Door County Ice Cream Factory

Door County Nature Works

Eagle Harbor Inn

EcoDoor, LLC

Ecology

Edgewood Orchard Galleries

The Garden Lady

Gills Rock Stoneware

Joe Jo's Pizza and Gelato

Impressions Printing & Graphics, Inc

Dr John Ludwigsen DDS and

Dr Timothy Tishler DDS

McEvoy's Culinaria, LLC

RentShadowLawn.com

Ross Estate Planning

Sunnypoint Landscape

Terra Cottages

Young Automotive

Photo by Dan Egger

BOARD OF DIRECTORS

President
Jeff Ottum

President-Elect
Donna DeNardo

Treasurer
Bryan Nelson

Secretary
Donna Hake

Past President
Kathy Wolff

Jean Barrett
Tom Blackwood
Jack Finger
Peter Deschler
Barbara Frank
Mark Martin
Judy Perkins
Gretchen Schmelzer
Roy Thilly
Rob Watson
Karen Yancey



EMERITUS BOARD MEMBERS

Nancy Aten
Bob Barlament *
Mike Brodd
Dan Burke
Fran Burton
Dave Callsen
Beth Coleman
Andy Coulson
Robert Cowles *
Sharon Donegan
Frank Failing *
Cathy Fiorato
Robert Forsberg
Darlene Forsberg
Ken Gill
Betsy Guenzel *
Julie Guilette
Chan Harris *
Tony Haswell
Jon Hollingshead
Laurel Hauser
Jim Janning
John Jessup
Jim Ingwersen *
Jim Kinney
Lucy Klug
Lon Kopitzke
Terry Lappin

Jim Lester
Judy Lokken
Paul Mahlberg
Neil McCarty
John McMahon
Beverly Njaa *
Kevin Nordahl
Frank Pechman *
Nancy Rafal
Kate Rohrer
Carl Scholz
Neil Shadle
Oliver Skrivanie
Mary Standish
Tim Stone
Bill Tischler *
John Turner
Kieth Van Dyke
Rob Van Gemert
John Wilson *
Robert Yeoman
Bill Yunker *
Virginia Yunker *
Elizabeth Zimmerman
James Zimmerman *

* Founding Board Member

STAFF

Executive Director
Tom Clay
Community Conservation Director
Terrie Cooper
Administrative Assistant
Amy Dwyer
Land Protection and Stewardship Specialist
Jesse Koyen
Stewardship and Restoration Manager
Amanda Pyke
Conservation Easement Program Manager
Drew Reinke
Administrative Director
Kristi Rice
Development Director
Cinnamon Rossman
Land Program Director
Julie Schartner



- Sound Finances
- Ethical Conduct
- Responsible Governance
- Lasting Stewardship

GIVE A GIFT MEMBERSHIP FOR THE HOLIDAYS!



Your recipient will receive a one-year membership, including a gift package of our most recent newsletter, a Land Trust member decal, *Hiking Trails Map*, and *A Guide to the Places We Protect*, along with a letter informing them of your gift. www.DoorCountyLandTrust.org/Gift

EVERGREEN GIVING CLUB

Setting up a monthly donation from your checking account or credit card is simple, safe and secure. Your monthly donation helps us care for trails, restore native plants, and protect Door County's special places. Whether you donate \$5, \$10, or \$100 per month, your donation adds up and makes a big difference! To begin, visit www.DoorCountyLandTrust.org/Evergreen, click the button to 'Donate Online,' and select 'monthly.' **Door County's wild things thank you!**



Door County Land Trust

Protecting Door County's Exceptional Lands and Waters...Forever

(920) 746-1359 • www.DoorCountyLandTrust.org

PO Box 65, Sturgeon Bay, WI 54235

*Protecting
Door County's
exceptional
lands and waters
would not be
possible without
the community
of members and
volunteers who
love this place.*

Thank you.



Find us on
Facebook.

Like preserving local lands?
Like us on Facebook.